

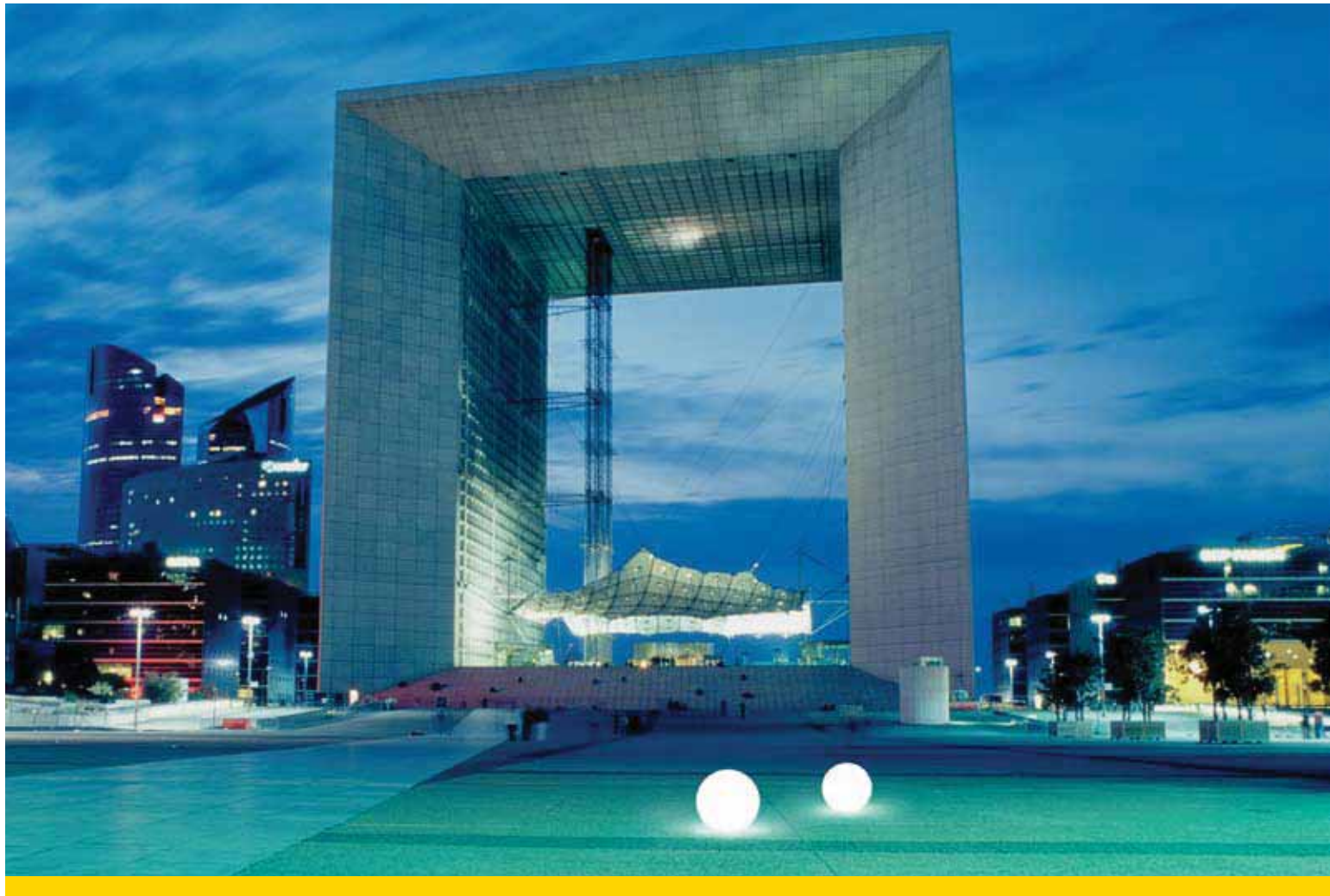
For your most **inspired** projects

energy efficient • shatterproof • all weather • commercial grade




Moonlight[®] USA, Inc.
FIRST CLASS LIGHTING

PRODUCT CATALOG



Moonlight® Globe Lights are shatterproof spheres from 10" to 30" in diameter that create an elegant ambience for interiors and landscapes.

Engineered, developed and manufactured in Germany, Moonlight® has won numerous design awards and has received some of the lighting industry's highest ratings for resistance to damaging elements like moisture and dust intrusion.

Designed to stand up to commercial applications, Moonlight® Globe Lights are also perfectly suited for applications using standard 120v power.

Moonlight's versatile product line can accommodate every use you can imagine:

- Floating for use in a lake, pool or fountain
- Security and landscape lighting
- Portable as an indoor/outdoor lamp
- Suspended from a ceiling, tree top or roof eaves as a pendant light with or without sound
- Speaker Globes for indoor/outdoor light & sound in one unit
- Cordless battery operated for large scale events where hard wired power is impractical.

Moonlight® Globe Lights have won eight European design awards since 1999.







Moonlight® Full Globe is our most popular style of globe. Consisting of a sphere with a hidden flat bottom for stability, this globe appears as full globe from above. The hidden base allows the globe to rest safely on any surface. Mounting bases for permanent indoor/outdoor installation are available. Mount di-

rectly to a surface as you would any fixed light, Surface mount is for a wall, ceiling, exterior hard surface, pool deck, dock piling, etc. Available in white, daylight colors and stonelook colors with interchangeable color filters, with or without remote, in sizes from 10" to 30" in diameter.

Moonlight® Full Globe Models



Full Globe Surface in White

Model Number	Size inches/mm
250.010	10"/250mm
350.010	14"/350mm
550.010	22"/550mm
750.010	30"/750mm



Full Globe Landscape in White

Model Number	Size inches/mm
250.020	10"/250mm
350.020	14"/350mm
550.020	22"/550mm
750.020	30"/750mm



Full Globe Portable in White

Model Number	Size inches/mm
250.003	10"/250mm
350.003	14"/350mm
550.003	22"/550mm
750.003	30"/750mm



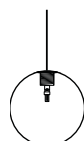
Full Globe Cordless in White

Model Number	Size inches/mm
250.130	10"/250mm
350.130	14"/350mm
550.130	22"/550mm
750.130	30"/750mm



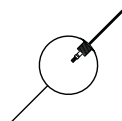
Full Globe Floating Cordless in White

Model Number	Size inches/mm
350.140	14"/350mm
550.140	22"/550mm
750.140	30"/750mm



Full Globe Pendant in White

Model Number	Size inches/mm
350.110	14"/350mm
550.110	22"/550mm
750.110	30"/750mm



Full Globe Suspended in White

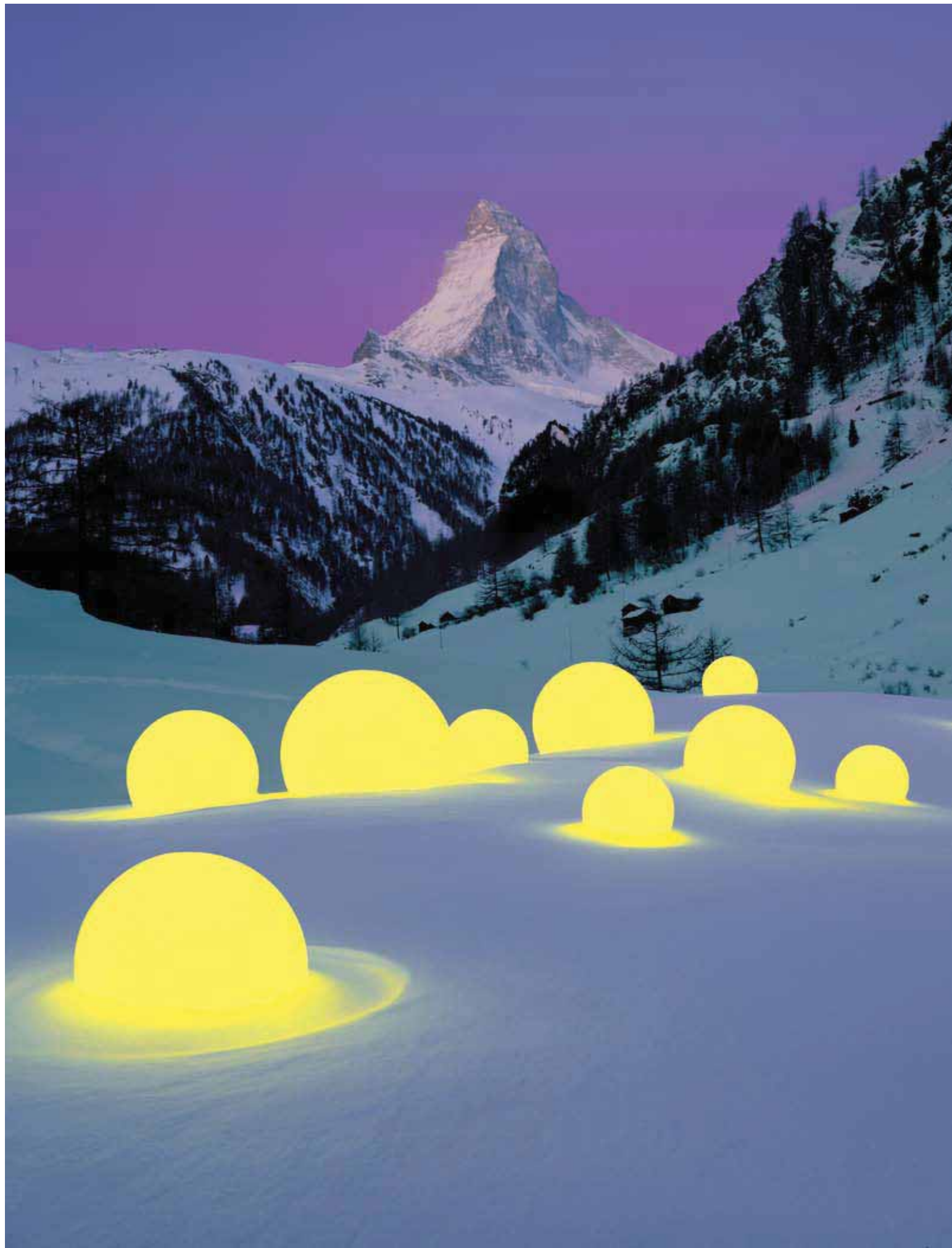
Model Number	Size inches/mm
250.120	10"/250mm
350.120	14"/350mm
550.120	22"/550mm
750.120	30"/750mm

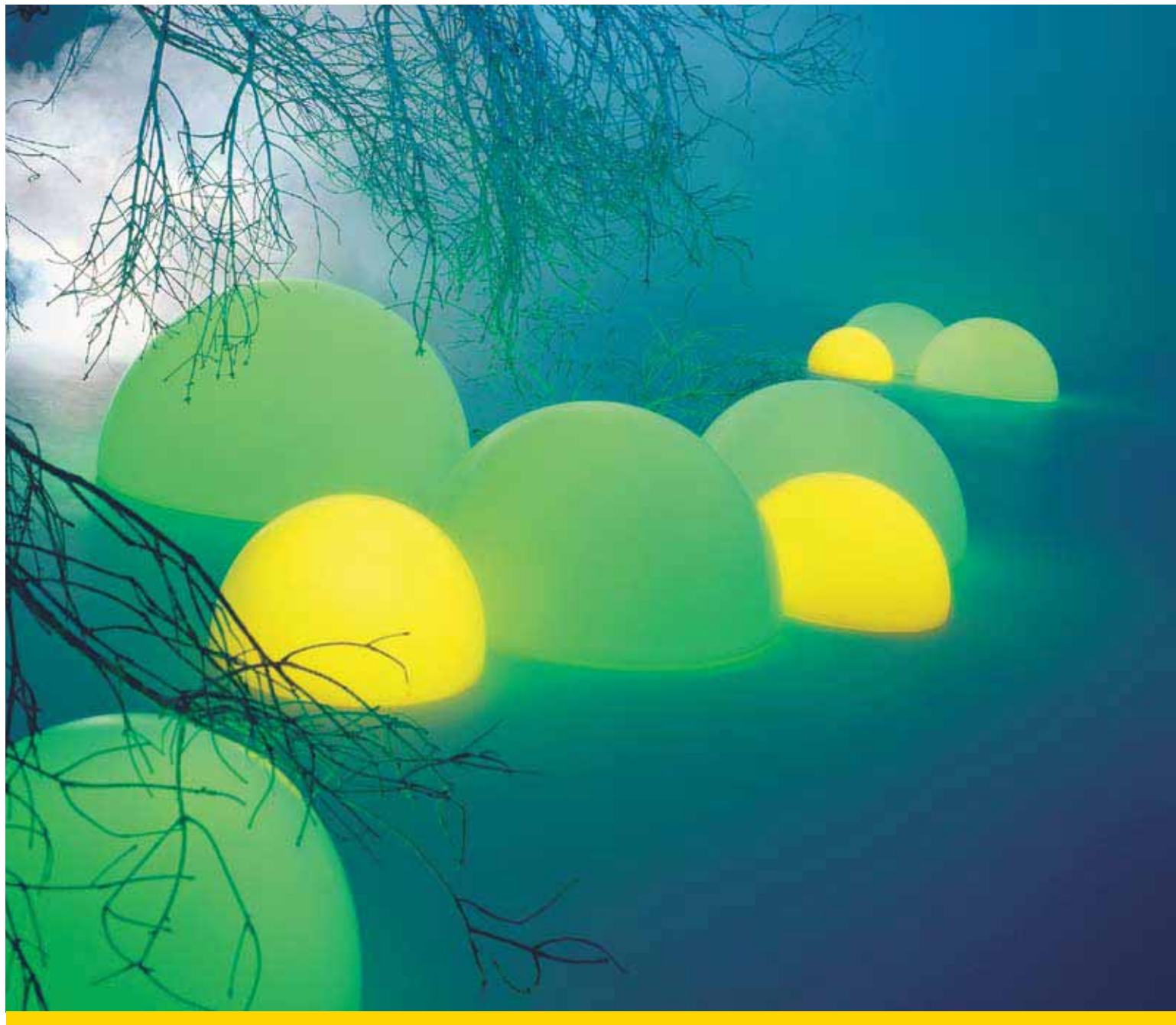


Full Globe with Speaker in White

Model Number	Size inches/mm
250.130	10"/250mm
350.130	14"/350mm
550.130	22"/550mm
750.130	30"/750mm

Contact your regional representative for pricing. Find your representative at www.moonlight-inc.com or call 239-541-8670.

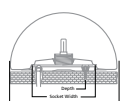




Moonlight® Hemisphere Globe is perfectly suited for a low profile application. Great as a landscape light, an entry light, as a security light for

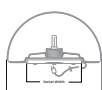
a stairwell or decoratively as a wall sconce. Mounting bases for permanent indoor/outdoor installation are available.

Moonlight® Hemisphere Globe Models



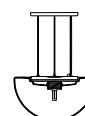
Hemisphere Globe Surface

Model Number	Size inches/mm
250.010	10"/250mm
350.010	14"/350mm
550.010	22"/550mm
750.010	30"/750mm



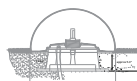
Hemisphere Globe Portable

Model Number	Size inches/mm
250.003	10"/250mm
350.003	14"/350mm
550.003	22"/550mm
750.003	30"/750mm



Hemisphere Pendant White

Model Number	Size inch/mm
350.100	14"/350mm
550.100	22"/550mm
750.100	30"/750mm



Hemisphere Globe Landscape

Model Number	Size inches/mm
250.020	10"/250mm
350.020	14"/350mm
550.020	22"/550mm
750.020	30"/750mm



Hemisphere Globe Cordless

Model Number	Size inches/mm
250.130	10"/250mm
350.130	14"/350mm
550.130	22"/550mm
750.130	30"/750mm

Contact your regional representative for pricing. Find your representative at www.moonlight-inc.com or call 239-541-8670.

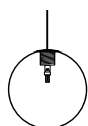




Moonlight® Pendant Globes bring the delightful glowing effects of Moonlight off the ground and into the air. Use as a traditional pendant light with the added benefits of durable construction, shatterproof

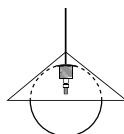
Moonlight Suspended Globes materials and energy saving illuminants. Pendants offer unidirectional support, Suspended offers bidirectional support and the ability to install at unusual angles and in difficult situations.

Moonlight® Pendant Globe Models



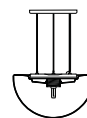
Full Pendant Globe in White

Model Number	Size inches/mm
350.110	14"/350mm
550.110	22"/550mm
750.110	30"/750mm



Full Pendant Globe in White with Reflective Hood

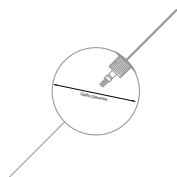
Model Number	Size inch/mm
RH350.110	14"/350mm
RH550.110	22"/550mm



Hemisphere Pendant White

Model Number	Size inch/mm
350.100	14"/350mm
550.100	22"/550mm
750.100	30"/750mm

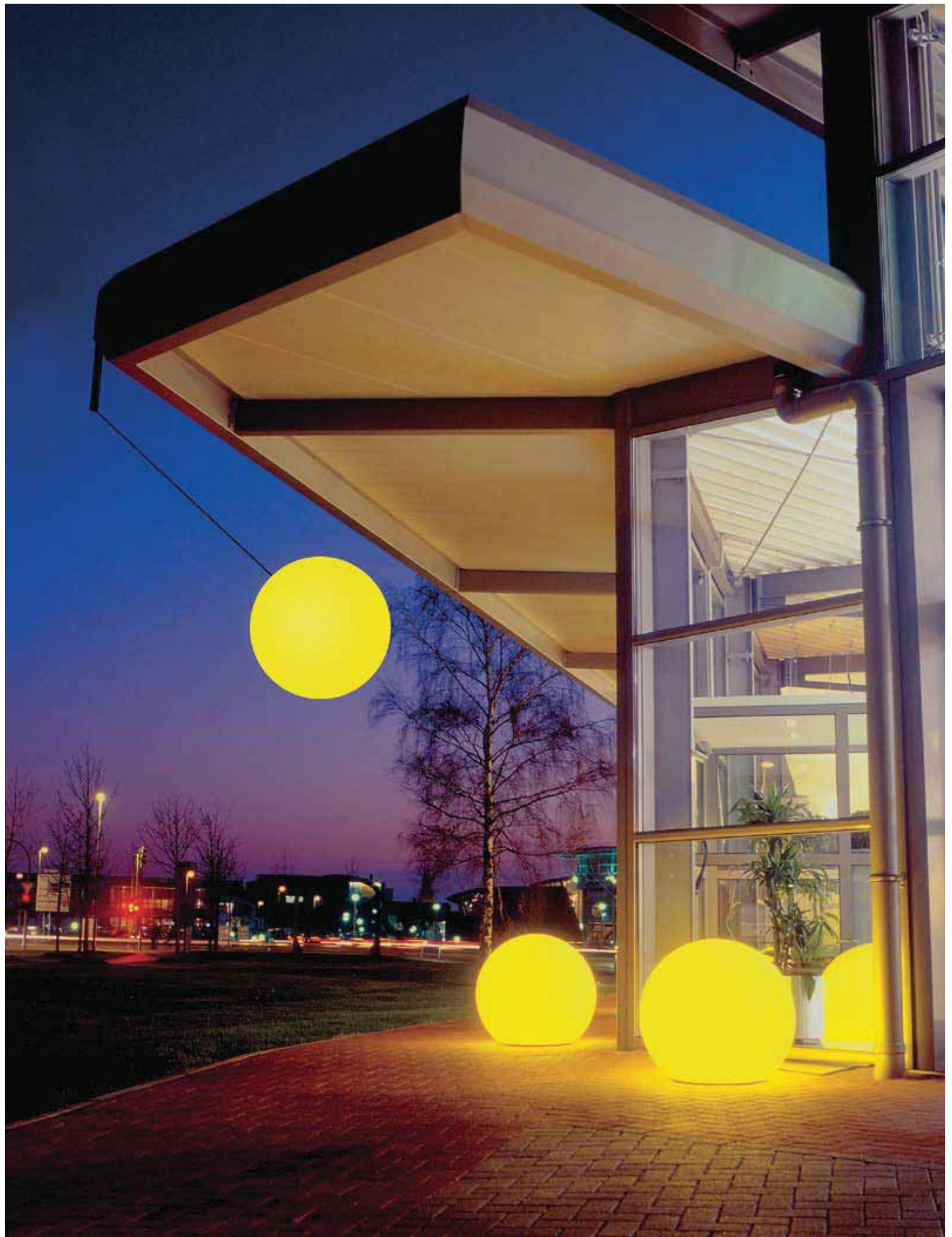
Moonlight® Suspended Globe Model



Full Pendant Globe in White

Model Number	Size inches/mm
350.110	14"/350mm
550.110	22"/550mm
750.110	30"/750mm

Contact your regional representative for pricing. Find your representative at www.moonlight-inc.com or call 239-541-8670.





Moonlight® Floating Globes are one of the most memorable products in our line. A completely spherical light that's weighted to remain upright with electrical components safely sealed in an internal,

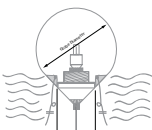
watertight compartment. Operates by remote control. This globe will draw a crowd and create a memorable impact.

Moonlight® Floating Globe Models



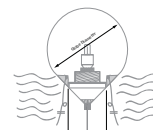
Cordless Battery Floating

Model Number	Size inches/mm
350.140	14"/350mm
550.140	22"/550mm
750.140	30"/750mm



Floating with 30' Cable

Model Number	Size inch/mm
250.070	10"/250mm
350.070	14"/350mm
550.070	22"/550mm
750.070	30"/750mm



Floating with 65' Cable

Model Number	Size inch/mm
250.0713	10"/250mm
350.0713	14"/350mm
550.0713	22"/550mm
750.0713	30"/750mm

Contact your regional representative for pricing. Find your representative at www.moonlight-inc.com or call 239-541-8670.





The world's first! Never before has there been a light fixture combining both soft illumination with 360° professional audio speakers. Available in portable, permanent and pendant models, Moonlight® Sound is a perfect solution for theme parks, night clubs, restaurants, special events, product rentals and even

home use. Moonlight® Sound is a revolutionary product whose time has come. Available in white, daylight colors and stonelook colors with interchangeable color filters, with or without remote, in sizes from 10" to 30" in diameter.

Moonlight® Sound Globe Models



Portable Moonlight Sound

Model Number	Size inches/mm
MLS 350.030	14"/350mm
MLS 550.030	22"/550mm
MLS 750.030	30"/750mm



Surface Moonlight Sound

Model Number	Size inch/mm
MLS 350.010	14"/350mm
MLS 550.010	22"/550mm
MLS 750.010	30"/750mm



Pendant Moonlight Sound

Model Number	Size inch/mm
MLS 350.110	14"/350mm
MLS 550.110	22"/550mm
MLS 750.110	30"/750mm

Contact your regional representative for pricing. Find your representative at www.moonlight-inc.com or call 239-541-8670.



Moonlight® Filter System



Easy as 1-2-3! Place the filter ring over the bulb socket, screw in the CFL bulb then slide the filter over the bulb and twist-lock into place. Filters

are quick and easy to change and can turn your standard white globe to any of 24 different colors when illuminated.

Moonlight® Accessories



Actual Size

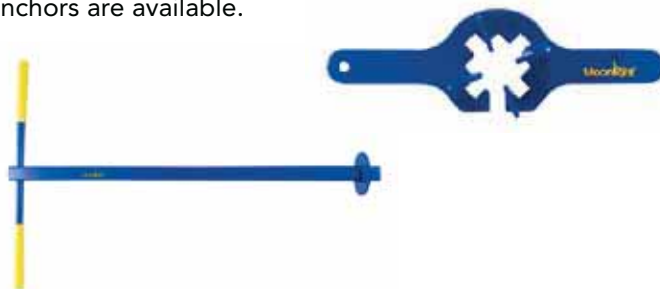
Cocktail Table Top discs are available for 22" and 30" globes. Made of crystal clear acrylic, the center has a specially mitered cut and silicone grip to hug your Moonlight securely.

Add a remote control and enjoy easy operation from far away. Floating globes, surface, landscape, pendants and portables have remote receiver options. Multiple globes can be operated from one control.

Moonlight® CFL Bulbs are made to fit with Moonlight's Filter System to provide a gorgeous, energy efficient light. AC and DC bulbs are available.

Moonlight® Globe Cleaning Kit cleans and polishes your Moonlight Globe. Use the special cleaning solution and pad once or twice a month.

Moonlight® Tools Some globes require special tools including our floating, pendant and landscape globes. Special wrenches and ground anchors are available.



Moonlight® Filter Color Chart all colors are approximate

 320 Dark Blue	 420 Dark Green	 611 Dark Orange	 210 Medium Red	 120 Dark Yellow
 310 Medium Blue	 410 Medium Green	 610 Light Orange	 200 Light Red	 110 Medium Yellow
 300 Light Blue	 400 Light Green	 631 Dark Pink	 621 Dark Rose	 100 Light Yellow
 650 Dark Violet	 641 Dark Turquoise	 630 Light Pink	 620 Light Rose	 010 White
 651 Light Violet	 640 Light Turquoise	 220 Dark Red		

Moonlight® Daylight Globe & Stone Globe Colors

all colors are approximate

 Light Granite	 Dark Granite	 Sandstone	 Terra-cotta	 Daylight Stone (assorted colors available)
 Daylight Red	 Daylight Blue	 Daylight Yellow	 Daylight Green	 NeverDark® Glow in the Dark

Moonlight® Programmable LED with Dali or DMX



Contact your Moonlight® sales representative for configuration details.

Moonlight® Ordering Information

Find your regional representative on our website www.moonlight-inc.com or call the US headquarters at 239-541-8670.





FIRST CLASS LIGHTING

US Headquarters

1314 E Cape Coral Parkway, Unit 210 | Cape Coral, FL 33904

www.moonlight-inc.com